

Residents can book two hard waste collections per financial year.

If you live in a unit or apartment block of six or more dwellings, please get in touch with your property manager to organise your collection.

You must have a booking before putting out hard waste.

Other disposal options

Asbestos

For information about disposing of asbestos, contact the EPA on 1300 372 842.

Detox Your Home

Residents can dispose of household chemicals for free through Sustainability Victoria's Detox Your Home drop off events or sites. For more information visit sustainability.vic.gov.au/detoxyourhome

Sharps, needles and syringes

Residents can collect a sharps container from any of Council's service centres and return to either Box Hill or Nunawading service centres for disposal. For more information visit whitehorse.vic.gov.au/sharps

Whitehorse Recycling and Waste Centre

Garbage, tyres, car batteries, timber, gas bottles, paint tins, brick and concrete can be taken to the Whitehorse Recycling and Waste Centre, corner of Burwood Highway and Morack Road, Vermont South. Charges may apply. Visit our website for a list of charges and accepted items.

Additional Hard Waste Collections

You are entitled to two hard waste collections per financial year. Additional bookings can be made on a user pays basis. For more information phone 9780 6120.

Consider donating or selling reusable items or using other Council services. Head to our website for more information.

More Information and Booking

Phone the contractor Cleanaway 9780 6120 or visit whitehorse.vic.gov.au/hard-waste-collection



ACKNOWLEDGEMENT OF COUNTRY

Whitehorse City Council acknowledges the Wurundjeri Woi-wurrung people of the Kulin Nation as the Traditional Owners of the land. We pay our respects to their Elders past, present and emerging.

CONTACTING COUNCIL

Postal Address: Whitehorse City Council
Locked Bag 2
Nunawading 3131

Telephone: 9262 6333
NRS: 133 677 then quote 9262 6333
(Service for deaf or hearing impaired people)

Email: customer.service@whitehorse.vic.gov.au
Website: whitehorse.vic.gov.au

Service Centres: Whitehorse Civic Centre
379-399 Whitehorse Road,
Nunawading 3131

Box Hill Town Hall Service Centre
Box Hill Town Hall
1022 Whitehorse Road, Box Hill 3128

Forest Hill Service Centre
Shop 275
Forest Hill Chase Shopping Centre
Canterbury Road, Forest Hill 3131



Your Residential Hard Waste Collection Service

您的住宅硬质垃圾回收服务



Printed on 100% recycled paper. Please recycle.



Hard Waste Bookings
whitehorse.vic.gov.au/hard-waste-collection
9780 6120

Presenting Your Collection Correctly

1 Place hard waste out on time

Neatly place accepted items on the nature strip the weekend before your collection week (by 6am Monday morning for collection during that week).

2 Present your materials correctly

Only place accepted items out for collection. Present general waste and scrap metal/electrical items in two separate piles. Check the list opposite or visit our website. Each item must:

- comply with size restrictions (generally 2 metres, smaller limits apply for some items)
- be easily lifted by 2 people
- in total must not exceed 3 cubic metres (1m x 3m x 1m)

3 Sticker

Place the orange "BOOKED" sticker (included in this information pack) on an item in your waste pile that won't be removed before collection and is easily visible from the road.

4 Remove uncollected materials

Unaccepted items will not be collected and must be removed from the kerbside within 24 hours after your booked items were collected or you risk receiving a fine.

Don't put your waste out too early

If you put your hard waste pile out too early, you risk:

- receiving a fine
- other people dumping items on your pile, which can cause your pile to contain items that are NOT accepted and/or go over the 3 cubic metre limit. This may result in your hard waste not being collected or a second entitlement being used.



One collection entitlement Two collection entitlements

- 3 cubic metres
- 1m x 3m x 1m
- 6 cubic metres
- 1m x 6m x 1m

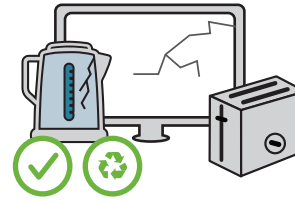
YES 是



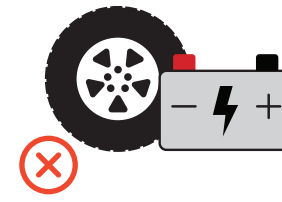
NO 否



Scrap metal, small car parts and lawn mowers, bikes, empty paint tins (lids removed)



Electronic appliances (any item with a plug, battery or cord), all batteries must be removed



Tyres and car batteries



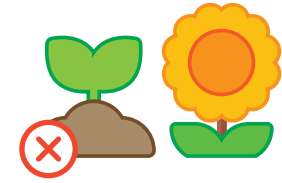
Engine oil and engine blocks



Timber (no longer than 1.5m and no more than 10 pieces)



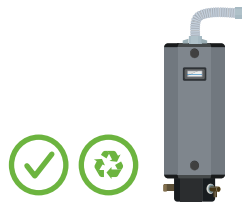
Tree branches and prunings – bundled and tied with string or twine. Branches must be less than 7.5cm wide and 1.5m long. Bundles must be smaller than 30cm wide



General garden waste (other than branches/prunings), soil or earth



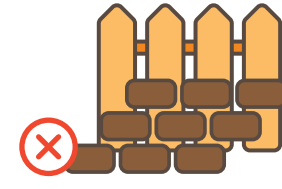
Household waste and recyclables



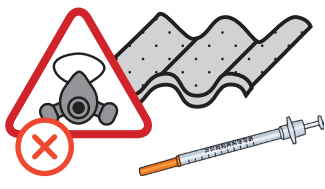
Hot water systems (empty water and max weight 55kgs)



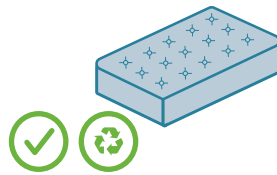
White goods including washing machines, stoves and fridges with doors removed or taped shut



Building and renovation materials including rubble, cement sheeting, fences or pallets



Asbestos, sharps and other hazardous waste



Mattresses and bed bases (maximum of 2)



Furniture



Gas cylinders



Household chemicals, paint and pesticides



Carpet rolled and tied (maximum of 1 roll, no wider than 1.5m and able to be carried by 1 person)



Glass items, ceramics and crockery (wrapped and labelled 'glass' or 'crockery')



All material collected including compacted material is taken to a Transfer Station for sorting and recycling. Items may be collected by multiple vehicles.